



REED COLLEGE OFFICE OF ADMISSION

3203 SE Woodstock Blvd.
Portland, Oregon 97202-8199
TL 503/777-7511 ♦ TF 800/547-4750
FX 503/777-7553
EM admission@reed.edu
WEB web.reed.edu

International Student Guide

Applying to Reed College

Reed welcomes applications from international students whose educational interests would be served by Reed's programs in the sciences, social sciences, arts, and humanities. The college seeks students who are well prepared academically and who are serious about a broad-based education. Admission to Reed is competitive and is based upon a close examination and comparison of credentials from many highly qualified applicants. Each international student's application for admission is reviewed carefully by at least two Reed College admission professionals. Intellectual curiosity, academic performance, and an understanding of Reed are among the criteria used to evaluate each applicant's candidacy.

A number of points warrant particular attention as you consider applying to Reed:

■ For proper evaluation, the admission committee requires full secondary school transcripts (and college or university records, if any), a description of the courses taken, and a statement of grades (or evaluations) for each course. Students studying under a system that requires examination (for example, the International Baccalaureate or the British System) are asked to submit exam results at the time of completion. Predicted results should be sent with the application for exams that are in progress. British System candidates are expected to sit for A-levels. Students who successfully complete A-Level, International Baccalaureate, Abitur, or Lycée programs may be eligible for up to one year of advanced credit from Reed.

■ We require results from the Scholastic Aptitude Test (SAT I) of the College Entrance Examination Board (CEEB). This test is administered September through January in most major cities throughout the world. For information and application, see the College Board website at collegeboard.com. (Students from the People's Republic of China and other countries where the CEEB exams are not administered are exempt from submitting SAT results.) In lieu of the SAT I, you may submit the ACT.



■ International applicants whose native language is not English are required to submit results of the Test of English as a Foreign Language (TOEFL). The substance of Reed's courses and the style in which they are conducted demand a thorough understanding of and a high degree of proficiency in the English language. Admission to Reed usually requires a minimum TOEFL score of 600 paper-based and 250 computer-based. The average TOEFL score for international students entering Reed is approximately 650 paper-based and 280 computer-based. For information and application log onto toefl.org.

■ We require two teacher recommendations from two different academic areas. Although they need not be written in English, the inclusion of an accurate translation will expedite the processing of the application.

■ If you are a permanent resident of the U.S., you must submit a photocopy of your alien registration (green card) with your application.

■ Reed makes admission decisions on an early timetable. Early decision application forms must be submitted either by November 15 for option I or January 2 for option II. Non-U.S. citizens requesting financial aid are not eligible for early decision option II. Freshman application forms must be submitted by January 15; decisions are mailed from the college in late March. International students should make arrangements to take the CEEB and TOEFL tests no later than December of the year before they apply and should complete their applications by the January 15 deadline. Occasionally an extension of the deadline is granted to overseas applicants; however, students applying for financial aid must meet the January 15 deadline in order to be considered for an award. A student applying for transfer admission must submit an application by March 1.

■ Corresponding by fax or email reduces the waiting period for international mailing. The admission office fax number is 503/777-7553; the email address is admission@reed.edu. If you have a fax number or email address where you can receive messages, please provide it to us so that we may reach you in the most efficient manner possible.

■ We ask that you supply the following information clearly labeled "Reed application supplement" and include it with your other application materials:

- 1) Have you applied previously to Reed? If yes, when?
- 2) To which other schools are you applying?
- 3) "Why Reed?" In a short essay, explain how you first became interested in Reed and why you think Reed would be an appropriate place, both socially and academically, to continue your education.

Financial aid

All financial aid at Reed is granted on the basis of demonstrated financial need. We offer no academic or athletic scholarships, nor do we offer any scholarships covering a student's total educational costs at Reed. Need is determined through an assessment of your family's financial resources and ability to contribute toward the total cost of your education. This assessed family contribution is subtracted from the total cost of tuition, fees, room and board, books, incidental expenses, and a travel allowance. The amount remaining is your demonstrated financial need.

In addition to being reviewed for admission to Reed, non-U.S. citizens who demonstrate financial need are reviewed a second time to determine if they will be offered financial aid. This process is very selective. Some candidates may be placed on a short financial aid wait list.

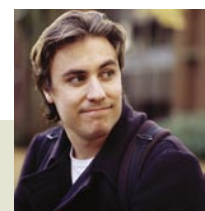
Even though Reed is an independent college, funds from the United States government provide a significant portion of a student's financial aid package. These funds are available only to students who are U.S. citizens or have permanent resident status in the U.S. As a result, when Reed offers financial aid to international students, the entire package is composed of Reed funds. Since our funds are limited, we can only offer financial aid to approximately 15 to 25 international students each year. In a typical year, 100 to 125 qualified international freshman and transfer applicants compete for these few awards. For applicants who demonstrate need, Reed will admit only those who also receive financial aid awards. All offers of financial assistance include grants, work opportunities, and loans. Loans must be repaid to the college.

If you are requesting financial assistance (non-Canadian citizens)

If you plan to apply for financial aid from the college, you must complete the Reed international student financial aid application, available in print or online at web.reed.edu/financialaid. Instead of this form, you can also submit the

foreign students financial aid application (FSFAA), and the international certification of finances form. In either case, you must also submit the general Reed financial aid form included in the application packet.

You should send the completed forms to Reed with your admission application by January 15 (March 1 for transfers). Since financial aid decisions for international students are made in early March for freshmen (early April for transfers), it is imperative that you submit your admission and financial aid forms early and urge your counselor and teachers to do likewise. Applications not completed in a timely fashion will not receive full consideration for financial aid. Please keep in mind that all students who receive financial assistance or an offer of employment while attending Reed College must obtain a U.S. social security number. You may ask the nearest U.S. embassy for more information on how to get a U.S. social security number.



Notable Alumni

Amir Alagheband '95, physics, Iran and Canada. B.S. mechanical engineering, California Institute of Technology; M.S., mechanical engineering, Stanford; senior mechanical engineer at Ziba Design, a Portland industrial design firm.

Nicolas Constantinesco '95, mathematics–political science, France. M.B.A., University of Chicago; consultant in corporate finance at McKinsey & Company in Chicago.

Shareen Joshi, '98, economics–mathematics, India. M.A., M.Phil; working on Ph.D. in economics at Yale University. Consulting at World Bank, Santa Fe Institute.

Jan Liphardt '96, biology, Germany. Ph.D., biochemistry. Post-doctoral fellow in the physics and chemistry departments of the University of California–Berkeley.

Ritankar Pal '93, mathematics, India. Director, derivatives trading, Citigroup.

Jacob Salomon '97, economics, France. UK partnership manager for Cortal Bank, France's largest online brokerage.

Bakul Soman '96, economics, India. Network engineer at Terra Lycos, Inc.

Francisco Toro '97, political science, Venezuela. M.S. in social policy and planning. Freelance foreign correspondent, Caracas, for English-language newspapers, websites, and magazines.

Junryo Watanabe '97, biochemistry and molecular biology, Japan. Ph.D. student in the department of neurobiology and behavior at State University of New York at Stony Brook.



“Reed is an excellent learning environment. I have had a great experience so far. The small classes and the one-to-one interaction with professors offer a great opportunity for one who is interested in the pursuit of knowledge. In four years you will be challenged and grow overall as an individual. It is the place for self-driven individuals who welcome hard work and many unique times.”

—STELA DHAMI '03, ALBANIA

If you are requesting financial assistance (Canadian citizens)

If you are a Canadian citizen or a permanent resident of Canada, you must complete the College Scholarship Service's (CSS) Profile. Those with a U.S. social security number must submit the form to CSS; those without a U.S. social security number must submit the form to Reed's financial aid office. For information about Profile applications, go to collegeboard.com. You must also complete the Reed financial aid form in the application packet. In addition, Canadian citizens and permanent residents must complete the certification of finances form or the appropriate section of the Reed international student financial aid application. Please keep in mind that all students who receive financial assistance or an offer of employment while attending Reed College must obtain a U.S. social security number. You may ask the nearest U.S. embassy for information about how to get a U.S. social security number.

If you are not requesting financial assistance

All international citizens, including Canadian citizens and permanent residents, must submit the certification of finances form or the appropriate section of the Reed international student financial aid application. This form must be completed in order for a student to be issued the I-20 document needed to obtain a student visa.

Costs for the 2005-06 school year

| | |
|---|-----------------|
| Tuition and fees (direct) | \$32,590 |
| Room and board (direct) | \$8,516 |
| Books, personal expenses, other incidentals (indirect) | \$1,850 |
| Total | \$42,956 |

Direct costs will show on your billing statement from the business office. Indirect costs are probable expenses that are not billed by the business office, but for which you will be responsible. Another indirect expense that should be considered is cost for travel, which will vary by location.

The Reed community

At the beginning of each year, a week of orientation events helps students and their parents become acquainted with the multitude of services available to them in the Reed community. The week includes introductory sessions from academic departments, student services offices, and academic advising. A special orientation program for international students precedes the regular orientation.

Academic assistance and tutoring during the academic year are available in centers for writing, science, math, and quantitative skills. Information resource centers, in which students can use Apple Macintoshes and Unix systems,

are open 24 hours a day. The campus has one of the most sophisticated academic computing environments among the nation's leading liberal arts colleges.

Room and board

The residence halls at Reed offer convenient access to the school's facilities, as well as the opportunity to make friends. In addition, the residence life office maintains a bulletin board listing available off-campus rooms, apartments, or houses.

Food service at Reed provides a variety of options for students who live on or off campus, including vegetarian meals. The Paradox Café and Paradox Lost, small coffee shops on campus, are managed by Reed students.

Health care

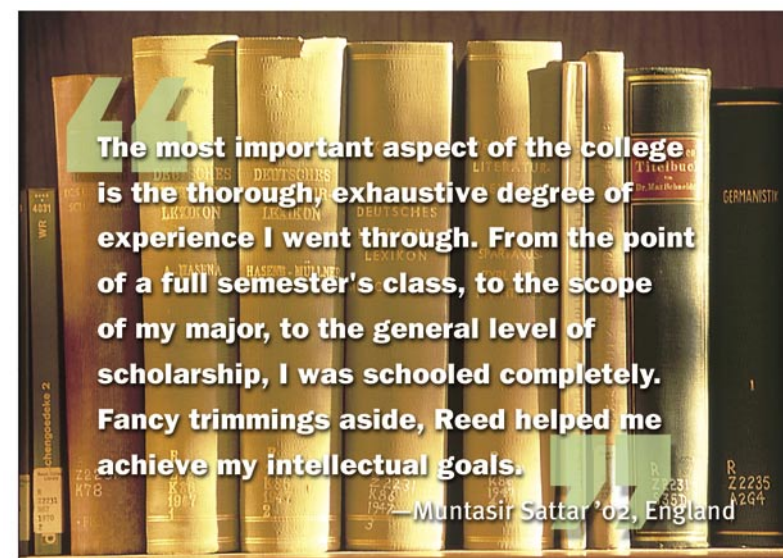
Staff members are available to assist students with health and counseling at the health center. All students must provide evidence of health insurance coverage or subscribe to the college's health insurance policy. This policy is designed to help pay medical costs most likely to be incurred by college students. Off-campus referrals to physicians in the Portland area can be made through the health center.

Campus security

Reed's beautiful, wooded campus is a very safe place to live and study. The campus security office is open 24 hours a day, operating the college switchboard and patrolling the campus. The community safety officers are graduates of the Oregon Police Academy and are trained to assist with CPR, first aid, fire safety, and criminal investigation.

Host families

The international programs office will be an important base for international students. This office coordinates the Reed College host family program, which provides ongoing contact with local families for international students. The stu-





dent and the family make arrangements for visiting and for attending activities and meals together. A student who is interested in sharing his or her cultural perspectives within local community groups will find the Town Gown International Forum program to be an interesting opportunity for international exchange.

Jobs and careers

During orientation week, a job fair is held at which students may meet staff members from the offices on campus that hire student workers. The career services office maintains several job boards for off-campus positions, and staff advisers are very helpful in assisting students with their job search. Specific details about student visa requirements, social security, and income tax for employment will be provided for you when you enroll at Reed. The career services office also assists in job placement after you graduate.

Summer internships and jobs are available through the career services office. Recent opportunities have included internships at:

- Princeton plasma physics lab
- Aegean Wildlife Hospital
- theatre in New York City
- Stanford Linear Accelerator Center
- Harvard biophysics department
- Coca-Cola, Madrid
- Microsoft
- UC San Diego
- Mayo Clinic
- Intel

Graduate schools

The career services office is instrumental in guiding students through the application process to graduate schools. Reed's focus on academics and research is invaluable in preparing students for continued study. Graduate schools most frequently attended by Reed alumni seeking Ph.D.s include the University of Chicago, Harvard, Stanford, the University of California at Berkeley, Yale, Cornell, the University of Washington, and the University of Oregon. For those seeking M.D.s, the most frequently attended medical schools are Harvard, Stanford, the University of California, Cornell, the University of Washington, and Oregon Health and Science University. The law schools most frequently attended by Reed graduates are the University of Chicago, Yale, Harvard, the University of California at Berkeley, and the University of Oregon.

The Higher Education Data Sharing Consortium's *Weighted Baccalaureate Origins Study* (2002) revealed data on Ph.D.s granted from 1991 to 2000. This list (right) shows the top 10 institutions in the

nation ranked by percentage of graduates who go on to earn a Ph.D. in selected categories.

Campus activities

Students have many opportunities to participate in activities throughout the academic year, from attending concerts to doing volunteer work in the Portland community. Students may participate in classes and activities at the sports center, which has two gyms; an indoor pool; squash, handball and racquetball courts; a weight room; saunas; a mat room; and dance studio. The theatre on campus also welcomes participation from students in all majors.

Off-campus resources

Reed is surrounded by residential neighborhoods. Commercial areas are within walking distance from the campus, featuring a variety of shops, grocery stores, banks, and a public library. A public bus and light-rail transit system serves Portland and nearby communities.

The Reed campus is on the east side of the Willamette River. In downtown Portland, approximately 15 minutes away on the west side of the river, are the central public library, a performing arts center, the Portland Art Museum, Portland State University, many restaurants, and a variety of businesses. Other universities and colleges are within a 30-minute ride. Portland is noted for its parks, which are a pleasure to explore. The city has demonstrated its concern for bicyclists by installing extensive stretches of bicycle lanes on most major streets.

Students may travel nationwide from downtown train and bus stations. The Portland International Airport, about 30 minutes away from the campus, can be reached by taxi, airporter service, or the local bus and light rail system.

Beginning with an orientation backpack trip, students may find ample opportunities to explore Oregon and the Pacific Northwest together. Within a few hours, an adventure can begin at the Pacific Ocean or in the Cascade Mountains that will give an excellent balance to the academics that constitute the foundation of the Reed experience.

| RANKING BY ACADEMIC FIELD IN PERCENTAGE OF FUTURE PH.D.s | | | |
|--|------------------------------|------------------------|------------------------|
| LIFE SCIENCES | MATH & STATISTICS | SOCIAL SCIENCES | ALL DISCIPLINES |
| REED | Caltech | St. John's | Caltech |
| Caltech | Harvey Mudd | Thomas Aquinas | Harvey Mudd |
| Swarthmore | REED | Bryn Mawr | Swarthmore |
| Rush | MIT | REED | REED |
| Kalamazoo | Univ. of Chicago | Yale | MIT |
| Univ. of Chicago | St. Olaf | Swarthmore | Carleton |
| Johns Hopkins | Pomona | Amherst | Bryn Mawr |
| Earlham | Rice | Oberlin | Univ. of Chicago |
| SUNY Environmental Science | St. John's | Carleton | Oberlin |
| MIT | Grinnell | Pomona | Yale |